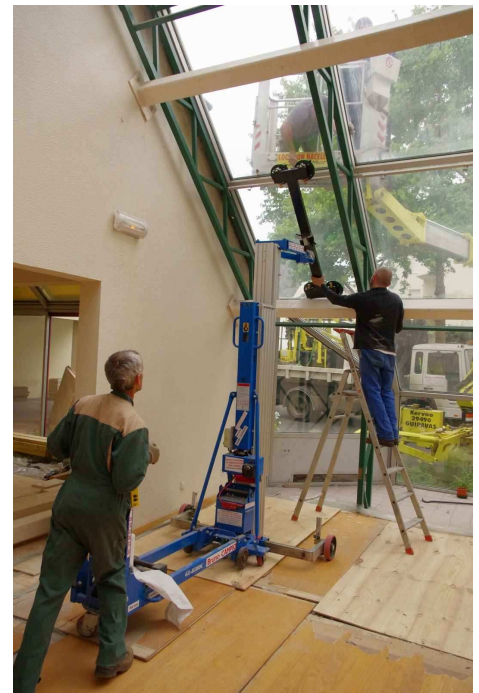


300 kg up to 8,7 m lifting height

For roof and front glazings



The KSF – GL DC is a compact electric glass lift for the vertical and overhead glazing.

It is an autonomous device supplied by a battery and with its equipment also a multi-purpose material lift for construction site or workshop.

Lifting device

- Quick folding base, set up in 10 seconds without tools, easy and convenient
- Very strong and compact construction
- Heavy duty casters wheels to moving in job site
- Two lifting screws for use in uneven ground. It can also be set up under slope
- Mast provided with a double anti fall system
- Steel casing on the first mast
- Steel pulleys with upper ring
- Lifting eye for crane transport
- High resistance lifting steel cable
- Easy to carry for horizontal or vertical transport

Electrical operating

- Electric winch 12 V with automatic brake
- Steel cable guided by a roller fairlead
- Winch supply by a high performance maintenance free battery
- Integrated Automatic battery charger
- For complete safety winch and battery are integrated in a steel casing

Control

- Versatile control of the selection of the user by
- Industrial radio remote control with emergency stop or control box

Other model on request

GL – With manual winch



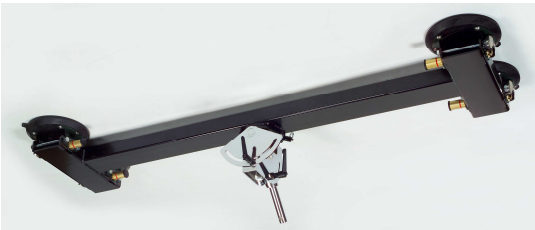
Standart equipments



GL - U

Universal Crane arm (patented)
with universal swivel design.

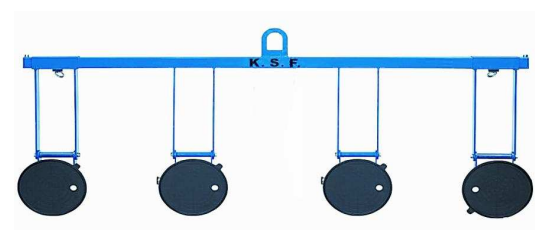
- Retractable and foldable, available carry out installation
Works around 300 ~ 600 mm scope
- Load capacity 300 kg
- Weight 18 kg
-



GL 4 V

Universal cradle for roof and front glazings

- Load capacity 180 kg
- With 4 vacuum suction cups
design with 360° rotation, available fixed at any position
- No limit to a height space overhead
- Dimensions 1460 x 454 mm
- Weight 27 kg
-



GL - 4 V - MR

Hanging crane for front glazing

- Load capacity 260 kg
- With 4 vacuum suction cups on
flexible angle control
- Easy to lift the glass from the floor or from a wall
- Dimensions 1450 x 537 mm
- Weight 18 kg



FOLK

- Load capacity 300 kg
- To lift construction parts
- Weight 14 kg
- Dimensions 600 x 700 mm
- Option support for steel beam



HK

- Load hook in combination with the universal cradle

KSF – Electric glass lift – Model		GL 850 DC
Load capacity	kg	300
Lifting height	m	8,7
Basic height	m	2,15
Weight	kg	268
Counterweight (4 x 22,5 kg)	kg	90
Length – Width (store)	mm	900 x 760
Length – Width (operating)	mm	2220 x 1510

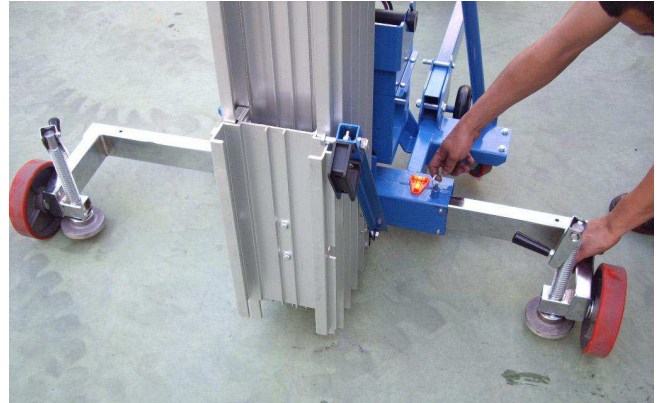
Features



cable under steel crank-case and crane lifting point for safe transportation



Pump vacuum suction cup Ø 200 mm
Capacity 100 kg vertical
body brass and steel
GS Safety factor 2



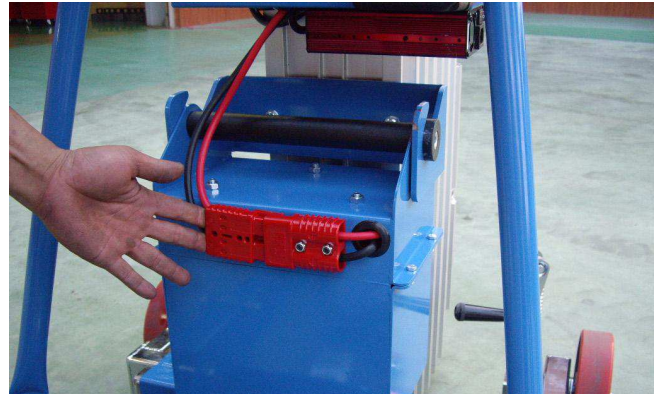
Variable wheelbase chassis with 2 lifting screw and spirit level for use on sloping ground



Steel pulleys with upper ring



Roller fairlead for the steel cable



removable battery protected in a steel housing with quick connector



Radio remote control with emergency stop



Remote control with 5 m cable



Counterweight 4 x 22,5 kg



Easy tip of the mast for easy horizontal or vertical transport

